





CONNECTING WITH ART

The Foundation's Discovery Gallery brings local painters and sculptors into the picture.



DISCOVERY LAND Company is very much about making connections. By creating exquisite communities in extraordinary environments, Discovery provides members with places to strengthen bonds—with the outdoors, with new experiences, and, most importantly, with family, friends, and their own best selves.

The Foundation's Discovery Gallery, a program being inaugurated at Baker's Bay Golf & Ocean Club in the Bahamas, is extending those connections by linking members to local artists in a way that supports the surrounding community.

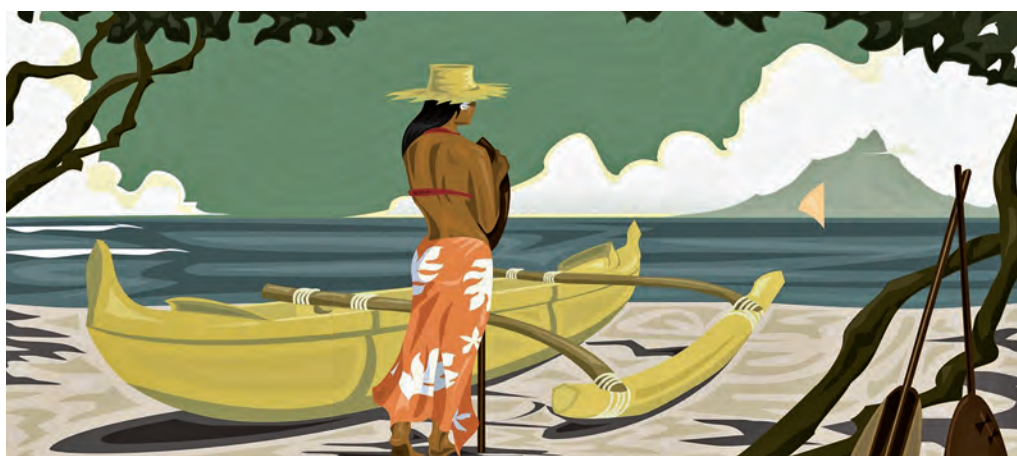
Executive director Christy Nichols came up with the idea while she was at El Dorado Golf & Beach in Los Cabos, Mexico, working with charities affiliated with the Foundation.

"Seeing club villas being built made me think about all the interior walls that would need to be filled and the many members who like to personalize their décor," Nichols says. "I thought, what if we connected local artists with members and had a virtual gallery, with the Foundation



COURTESY OF GALERIE BONHEUR

Budding Bahamian artists and singers, the children at Every Child Counts (left) perform at their spring recital. The luminescent hues of "Ocala" (top) characterize Christopher Martin's abstract work, while Amos Ferguson's vivid style is on view in "The Honeymooners" (above).



The Foundation's Discovery Gallery includes varied island subjects such as Antonius Roberts' "Grouper" (top) and "Raiatea" by Mike Field (above). A student at Every Child Counts (opposite left) shows off the garden funded by DLCF. "The Pink House" by Amos Ferguson (opposite top) conjures Bahamian colors and themes.

receiving a portion of the sales prices to support its charitable work?"

She developed the concept in collaboration with Livingston Marshall, senior vice president of environmental and community affairs at Baker's Bay, who invited leading Bahamian artists to participate in the beneficial program.

"It's always great to see the bricks and mortar of a club take shape," says Marshall, "but by bringing in the art, we get to bring in the feel and the dynamics of the local culture."

Marshall introduced Nichols to artist Antonius Roberts, a committed environmental preservationist whose sculptures and large-scale public artworks dot the islands. Roberts serves on the advisory board of the National Art Gallery of the Bahamas and is one of several artists whose paintings are available through the Foundation's Discovery Gallery. He has also been indispensable in introducing Nichols to other artists whose work might be included.

"My goal is to create as many opportunities as I can by serving as a resource leading to authentic Bahamian art," says Roberts. "A lot of people who vacation here might love local art but not have the time—or know where—to find it. If we can put the art in front of Discovery members,



and they are moved to make a purchase, then that money stays in the Bahamas. It benefits artists, members, the Bahamian community at large, and disadvantaged children in particular.”

The program operates simply. Works by participating artists are displayed online on the Foundation web site (www.discoverylandcofoundation.org). The collection changes as pieces are sold and others become available. Members may view additional works by contacting Discovery Home Services or Nichols, who can contact the artists directly. Discovery Home Services seamlessly manages the sales transaction for the buyer, the artist, and the Foundation. The percentage of the sale that would normally go to a gallery is redirected to the Foundation, and the proceeds from Bahamian artists benefit children in the Bahamas.

“We are able to provide children with many types of focused assistance, such



as scholarships, disaster relief, school lunches, safe shelter, time at summer camp, or art classes,” says Nichols. “We even sponsor two college-age foster youths in professional-skills internships every year. That’s the reward for DLCF contributors: to see the children helped directly.”

In addition to Roberts, other artists whose works are part of the Foundation’s Discovery Gallery program include Mike Field, Stephen Craven, Chantel Bethel, Christopher Martin, Claudette Dean, Jessica Colebrooke, and the folk artists represented by Galerie Bonheur.

The Foundation Gallery program has also recently connected with the estate of Amos Ferguson, perhaps the Bahamas’

most famous artist, who died in 2009 and whose work was featured in a retrospective at the National Art Gallery of the Bahamas last May. A man of humble means, Ferguson began painting late in life, sometimes using house paint on cardboard, and he developed a vibrantly graphic style that illustrates themes from Bahamian life. At the Market at Baker’s Bay, a rotating collection of Ferguson’s valuable paintings will be displayed and other Ferguson-themed merchandise will be available.

“The gallery could become one of the largest ongoing revenue sources to sustain the good works of the Foundation,” says Nichols. “We’re anxious to spread the concept to other properties.” —JAMES BADHAM